



passion for sports grounds

SMG Sportplatzmaschinenbau GmbH

Robert-Bosch-Str. 3, DE - 89269 Vöhringen / Germany

Teléfono: +49 (0) 7306 96 65 0

Fax: +49 (0) 7306 96 65 50

Correo electrónico: info@smg-machines.com



CareMax - Mantenimiento
CareMax CM2B



artificial.

Los filtros de polvo instalados por SMG cumplen con la norma DIN EN60335-2-69/polvo clase M y EN779 "F8" o "F9". Suciedad con alta proporción de partículas finas o microplásticos procedentes de la abrasión del granulado o la fibra se extraen gracias a la potente turbina y se retienen en el filtro.

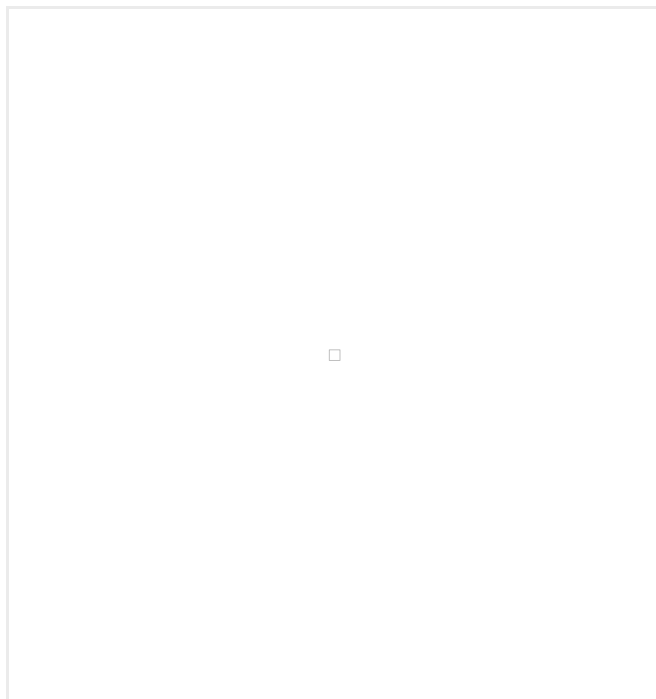
CareMax - Mantenimiento

CareMax CM2B

Vistas detalladas

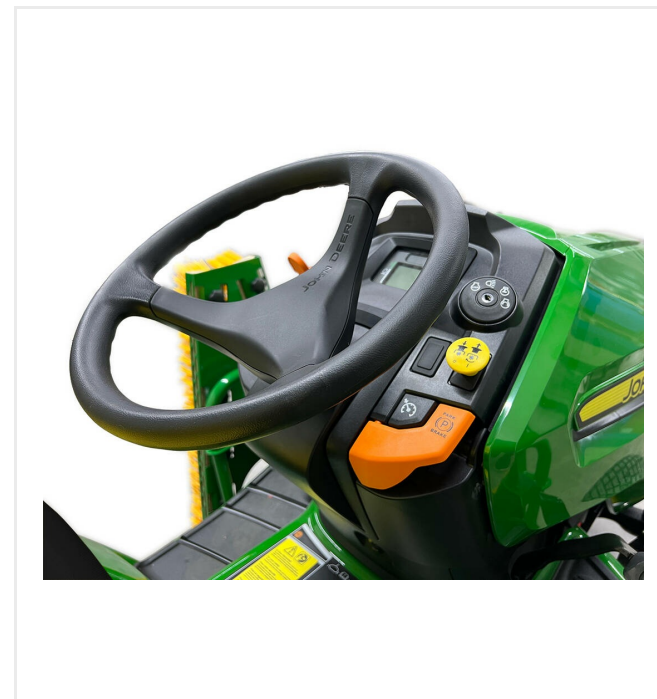


CareMax CM2B



Advanced Maintenance

Rotating brush for advanced maintenance.



Easy handling

Ergonomically arranged operating controls.

CareMax - Mantenimiento

CareMax CM2B

Vistas detalladas



Display

to control functions and service intervals.



Gently

Working depth of the steel tines are adjustable for gently loosening of the infilling material.



SMG dust filter

Self-cleaning dust filter comply with DIN EN60335-2-69/dust class "M" and EN779 "F8" or "F9".

CareMax - Mantenimiento

CareMax CM2B

Vistas detalladas



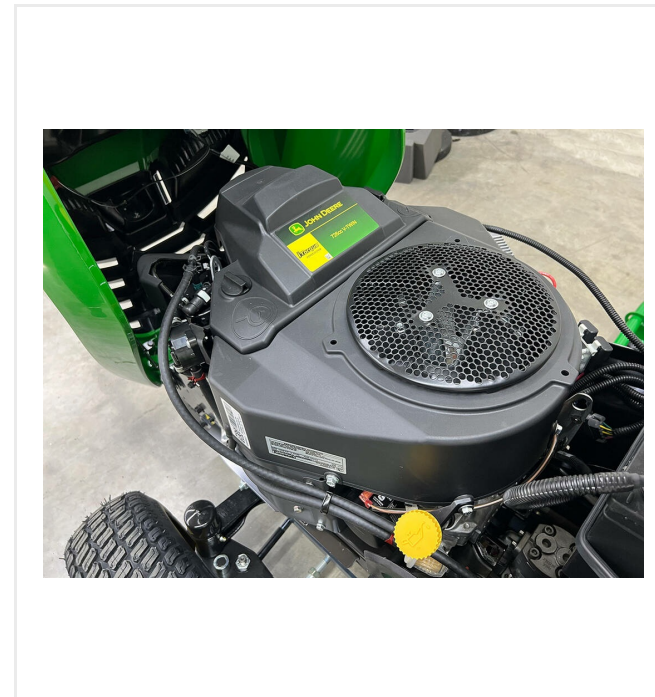
Compact

Drag brushes can be folded.



Versatile

Material flap to adjust the flow of debris and infill.



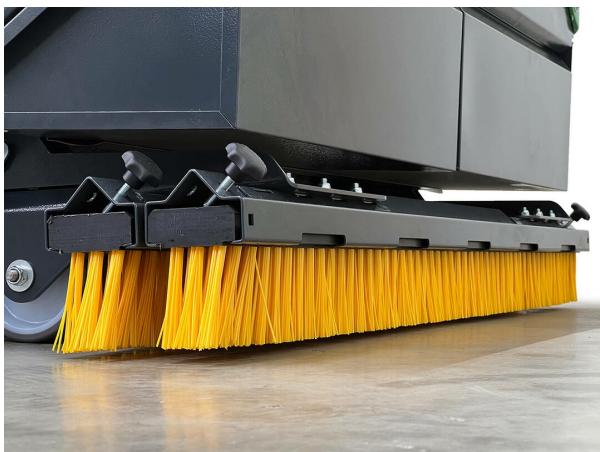
Engine

2-cylinder petrol engine, air-cooled / 16,4 kW (22,3 PS).

CareMax - Mantenimiento

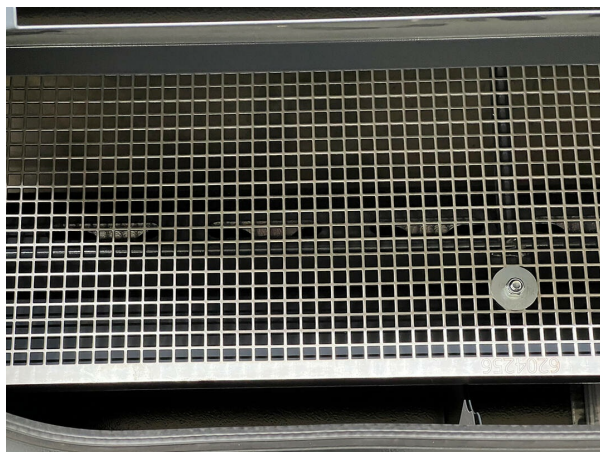
CareMax CM2B

Vistas detalladas



SMG Omega

Drag brush quick change system.



4 - 10 mm

SMG adjustable sieve for every particle size.



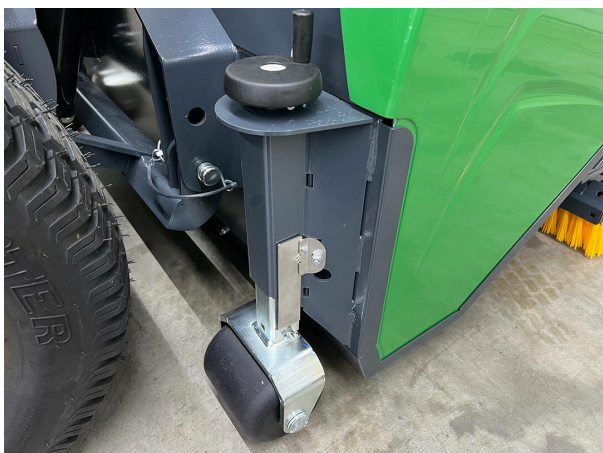
Seat

Suspended and adjustable driver seat.

CareMax - Mantenimiento

CareMax CM2B

Vistas detalladas



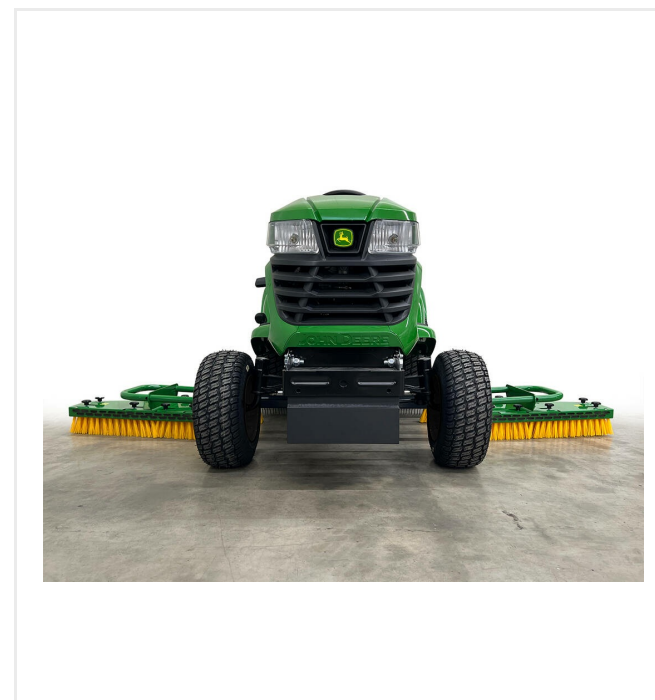
Precision

Handwheel for comfortable adjustment and scale to control the working depth.



SMG Omega

Side brush quick change system.



Wingspan

Drag brush for the maintenance process (working width 2,400 mm), adequate adjustable steel tines for loosening of the infilling material.

CareMax - Mantenimiento

CareMax CM2B

Información técnica

Motor	Motor de gasolina de 2 cilindros, refrigerado por aire / 16,4 kW (22,3 CV)
Motor de tracción	Hidrostático, velocidad hasta 15 km/h
Caja del filtro	Filtro permanente con autolimpieza
Cepillos rotativos	Ancho de trabajo 1100 mm
Ancho de trabajo	2.400 mm
Peso	685 kg
Medidas	L 2900 x A 1300 x H 1250 mm

Dimensiones de envío

L 2.900 x A 1.300 x H 1.300 mm

Sujeto a cambios técnicos



passion for sports grounds

SMG Sportplatzmaschinenbau GmbH | Robert-Bosch-Str. 3, DE - 89269 Vöhringen / Germany | Teléfono: +49 (0) 7306 96 65 0
Fax: +49 (0) 7306 96 65 50 | info@smg-machines.com | www.smg-machines.com