



passion for sports grounds

SMG Sportplatzmaschinenbau GmbH

Robert-Bosch-Str. 3, DE - 89269 Vöhringen / Germany

Phone: +49 (0) 7306 96 65 0

Fax: +49 (0) 7306 96 65 50

E-mail: info@smg-machines.com



RauMatic - Redevelopment
RauMatic R400D



RauMatic - Redevelopment

RauMatic R400D



Item number/s:

6230346

**Milling machine for synthetic sports surfaces.
Removal depth max. 10 mm.**

The renovation of sports surfaces through abrasion of the surface layer and subsequent re-coating is becoming ever more important as an alternative to a complete new installation. Reason being that it cuts down the cost to a great extent and saves considerable amount of materials. The original thickness and the technical characteristics of the rubber will remain the same. The RauMatic R400 is a milling machine for milling of the surface coating from elastic PU sports surfaces.

RauMatic - Redevelopment

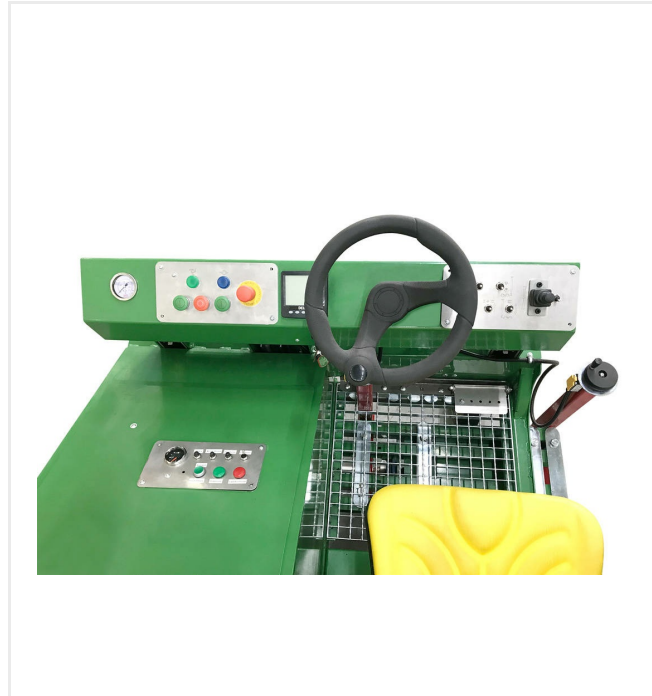
RauMatic R400D

Detail views



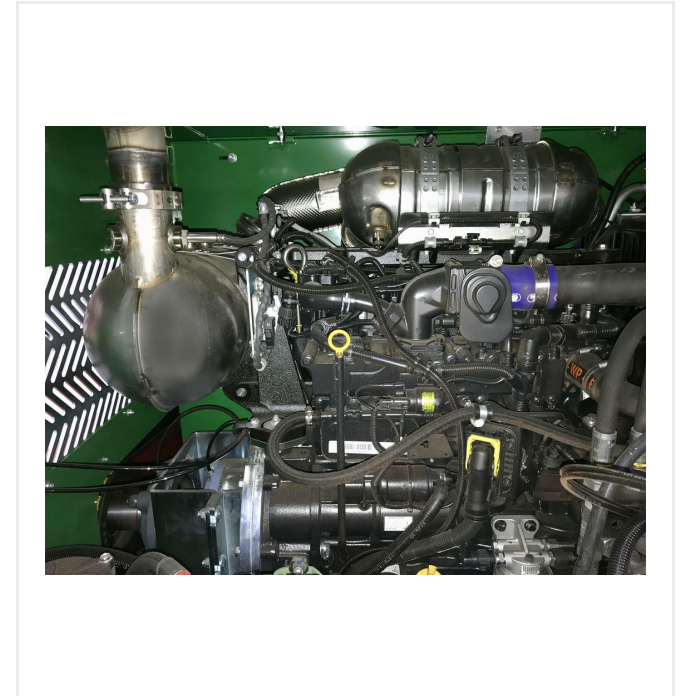
Precise

Integrated height levelling for evenly flat installation.



Easy handling

Driving seat with clearly arranged control elements.



Compact motorized

Powerful diesel engine with 100 kW (135,9 HP).

RauMatic - Redevelopment

RauMatic R400D

Technical information

Drive	water-cooled 4-cylinder diesel engine 100 kW (135,9 HP)
Working width	400 mm
Material removal (milling depth)	10 mm
Area performance	440 m²/h (4 mm milling depth)
Weight	2,055 kg
Dimensions	L 2,855 x W 1,635 x H 1,670 mm
Shipping dimensions	L 3,100 x W 1,800 x H 2,170 mm



passion for sports grounds

SMG Sportplatzmaschinenbau GmbH | Robert-Bosch-Str. 3, DE - 89269 Vöhringen / Germany | Phone: +49 (0) 7306 96 65 0
Fax: +49 (0) 7306 96 65 50 | info@smg-machines.com | www.smg-machines.com