



passion for sports grounds



SMG Sportplatzmaschinenbau GmbH | Robert-Bosch-Str. 3, DE - 89269 Vöhringen / Germany | Phone: +49 (0) 7306 96 65 0  
Fax: +49 (0) 7306 96 65 50 | [info@smg-machines.com](mailto:info@smg-machines.com) | [www.smg-machines.com](http://www.smg-machines.com)

# SandMatic B1505 RC/ECO

## SANDMATIC - FILLING



**Self-propelled, radio-controlled machine for the filling of artificial turf.  
Capacity 1,500 kg, working width 1,400 mm.**

The SandMatic B1505 fully meets the special demands placed on it by ultra-modern artificial turf surfaces and even when the pile is extremely high the prescribed amounts of sand or granulate will be exactly distributed and worked into the system. A slide valve enables the quantity of material strewn to be constantly variable from 2,5 - 40 kg/m<sup>2</sup>.

Driving speeds from 1 m/min to 15 m/min make the machine flexible in use. With the working width of 1,5 metres, theoretical performance of the machine ranges from 1,5 to 22,5 m<sup>2</sup>/min. The machine is driven by a 3-cylinder Kubota diesel engine with integrated hydraulic cooling system with a performance of 16,1 kW (21,9 HP).

All functions can be controlled by hand. This makes the operation method more convenient and expedites the working process. The machine can be also controlled manually by means of the operating panel.

The weight of the machine is supported by 8 air-filled, low-pressure tires. That way, the machine, when filled, conforms to the permitted ground pressure for the synthetic surface. The four pairs of wheels can be pivoted through 120°, which makes it extremely easy to manoeuvre.



# SandMatic B1505 RC/ECO / Detail views

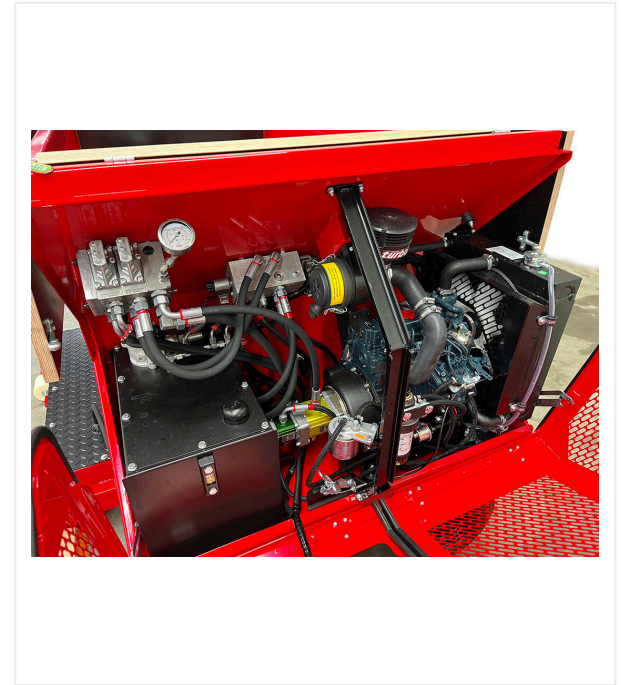
## SANDMATIC - FILLING



**SandMatic B1505 RC**



**SandMatic B1505 ECO**



**Engine**

3-cylinder Kubota diesel engine with integrated hydraulic cooling system with a performance of 16,1 kW (21,9 HP).

# SandMatic B1505 RC/ECO / Detail views

## SANDMATIC - FILLING



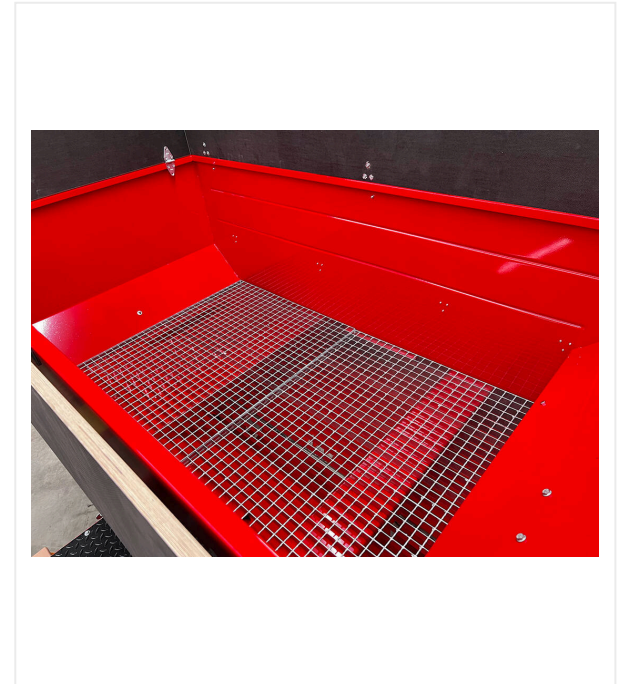
### Protected

tank, battery, magnet valves



### Container

1.5 to 3.0 m<sup>3</sup>



### Grid

with 3.5 x 3.5 cm mesh size.

# SandMatic B1505 RC/ECO / Detail views

## SANDMATIC - FILLING



### Control panel

All functions are clearly and centrally arranged.



### Dipstick

For precise infilling.



### Forklift bags

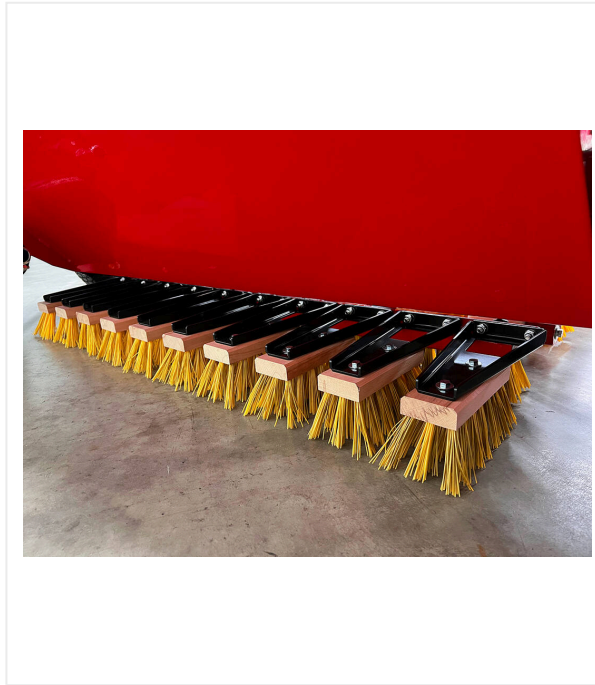
For safe transport.

# SandMatic B1505 RC/ECO / Detail views

## SANDMATIC - FILLING



**SMG Oscillating brush**



**Orbital moves**

to erect the fibre and simultaneously brushing in the infill material.



**Infill height**

Material strewn to be constantly variable from 2,5 - 40 kg/m<sup>2</sup>.

# SandMatic B1505 RC/ECO / Detail views

## SANDMATIC - FILLING



**Radio frequency (RF) remote control /  
SandMatic B1505 RC**

With 100 meter range.



**Manual spreading / SandMatic B1505 ECO**

With 3 meter spiral cord.

# SandMatic B1505 RC/ECO / Detail views

## SANDMATIC - FILLING

**Item number/s:** 6400103 / B1505 RC  
6222923 / B1505 ECO

---

**Spreading width** 1.400 mm

---

**Max. filling weight / Container volume** 1,5 t / 3 m<sup>3</sup>

---

**Spreading performance** 2,5 - 40 kg/m<sup>2</sup>

---

**Drive** 3-cylinder Kubota diesel engine / 16,1 kW (21,9 HP)

---

**Weight** 1,300 kg

---

**Dimensions** L 2,650 x W 1,800x H 1,950 mm

---

**Shipping dimensions** L 2,800 x W 1,250 x H 2,000 mm

---

Subject to technical changes



passion for sports grounds

SMG Sportplatzmaschinenbau GmbH | Robert-Bosch-Str. 3, DE - 89269 Vöhringen / Germany | Phone: +49 (0) 7306 96 65 0

Fax: +49 (0) 7306 96 65 50 | [info@smg-machines.com](mailto:info@smg-machines.com) | [www.smg-machines.com](http://www.smg-machines.com)