



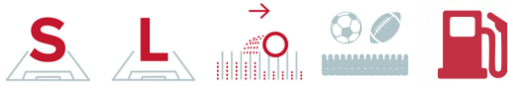
passion for sports grounds



SMG Sportplatzmaschinenbau GmbH | Robert-Bosch-Str. 3, DE - 89269 Vöhringen / Germany | Phone: +49 (0) 7306 96 65 0  
Fax: +49 (0) 7306 96 65 50 | [info@smg-machines.com](mailto:info@smg-machines.com) | [www.smg-machines.com](http://www.smg-machines.com)

# Spreader SP1300

## SPREADER - FILLING



**Self-propelled machine with stand-on operator platform, all-wheel drive, and all-wheel steering.**

The SP1300 spreader is the ideal solution for applying sand, rubber, and organic infill materials to artificial turf systems. It combines high efficiency with a compact design and is powered by a 22 HP Honda petrol engine.

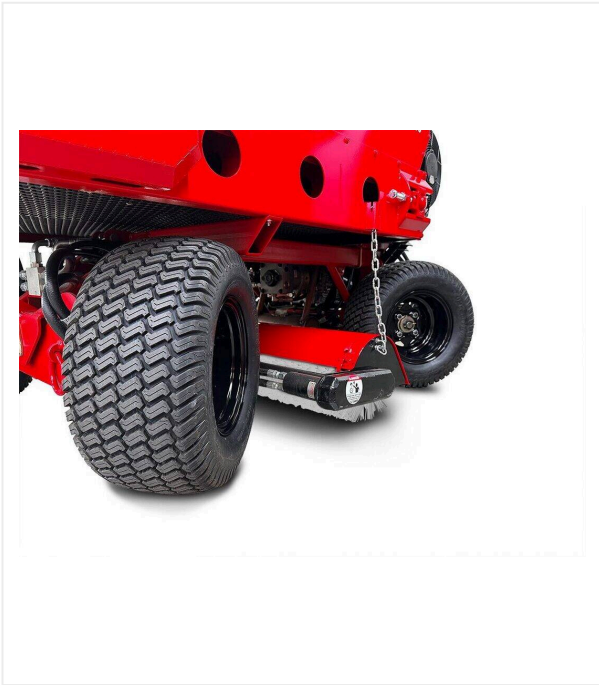
Thanks to its compact design, the SP1300 is perfectly suited for filling smaller areas such as padel courts, tennis courts, or futsal courts, but is also highly capable on larger fields. It impresses with a driving and working speed of up to 11 km/h.

The working width of 1,300 mm and the integrated rotary brush ensure even distribution of the material and effective incorporation into the artificial turf. A slide control allows precise adjustment of the spreading quantity. Since the belt speed is coupled with the hydrostatic drive, the spreading amount is proportional to the driving speed, ensuring a uniform and efficient spreading result. The four-wheel drive and steering system with four individually driven wheels provides exceptional maneuverability and enables precise edge work. The steering system and all-wheel drive reliably prevent surface deformation during the filling process. Thanks to its special design and low-pressure tires, the SP1300 operates with minimal ground pressure, protecting both the unfilled turf fibers and the subbase.



# Spreader SP1300 / Detail views

## SPREADER - FILLING



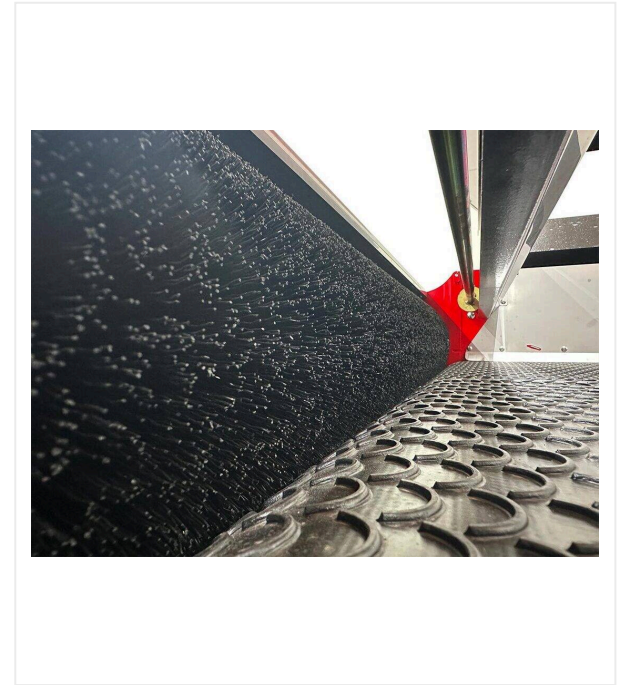
### Dual-Steer Technology

Turf- and base-friendly.



### Precise

Dosing handle for manual adjustment of the spreading rate.



### Effective

Spreading brush for even distribution of the infill materials.

# Spreader SP1300 / Detail views

## SPREADER - FILLING



### Rotary Brush

To brush the fibre and simultaneously brushing in the infill material.



### Ergonomic

Ride-along stand platform.

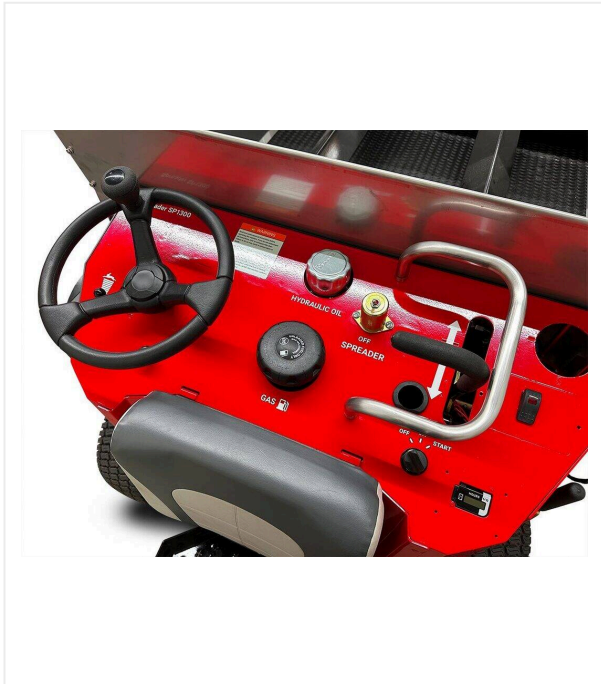


### Conveyor belt

For an uniform and efficient spreading result.

# Spreader SP1300 / Detail views

## SPREADER - FILLING



### User-friendly

Clearly arranged control elements.



### Light-footed

Four large-volume turf tires for minimal surface pressure.

# Spreader SP1300 / Detail views

## SPREADER - FILLING

**Item number/s:** 6400364

---

**Spreading width** 1,300 mm

---

**Max. filling weight / Container volume** 680 kg / 0.77 m<sup>3</sup>

---

**Drive** 2-cylinder Honda petrol engine / 16.5 kW (22 HP)

---

**Weight** 635 kg

---

**Dimensions** L 1,930 x W 1,400 x H 1,270 mm

---

Subject to technical changes



passion for sports grounds

SMG Sportplatzmaschinenbau GmbH | Robert-Bosch-Str. 3, DE - 89269 Vöhringen / Germany | Phone: +49 (0) 7306 96 65 0

Fax: +49 (0) 7306 96 65 50 | [info@smg-machines.com](mailto:info@smg-machines.com) | [www.smg-machines.com](http://www.smg-machines.com)