



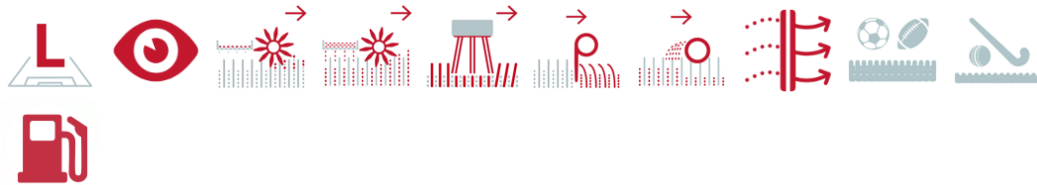
passion for sports grounds



SMG Sportplatzmaschinenbau GmbH | Robert-Bosch-Str. 3, DE - 89269 Vöhringen / Germany | Phone: +49 (0) 7306 96 65 0
Fax: +49 (0) 7306 96 65 50 | info@smg-machines.com | www.smg-machines.com

CareMax CM2B

CAREMAX - MAINTENANCE



Ride-on machine for the cleaning and care of artificial turf.

CareMax CM2B can perform several proven functions for the efficient cleaning and maintenance of infilled artificial turf pitches. Driven by a air-cooled petrol engine with 16,4 kW (22,3 HP) the compact machine manages the cleaning and maintenance of a typical sized pitch in relatively short time. Variable settings of the vibrating screen (from 4 to 10 mm) that can be optimally adapted to the conditions of infill guarantee perfect results. This brush is also depth adjustable.

CareMax CM2B is equipped with floating suspended triangular brushes mounted underneath the machine as well as a rear-mounted drag brush providing a working width of 2,400 mm. CareMax CM2B and its integrated proven technology will assure that the physical performance characteristics of the artificial turf will be maintained at all times. The rear-mounted accessory can be lifted hydraulically for transport. Two guide pulleys/transport rollers enable precise operation along sideboards and gentle storing of the brushes.

SMG dust filters installed by SMG comply with DIN EN60335-2-69/dust class "M" and EN779 "F8" or "F9". Dust with a high proportion of fines as well as granulate/fibre abrasion (microplastics) are extracted via the powerful turbine and bound in the filter.

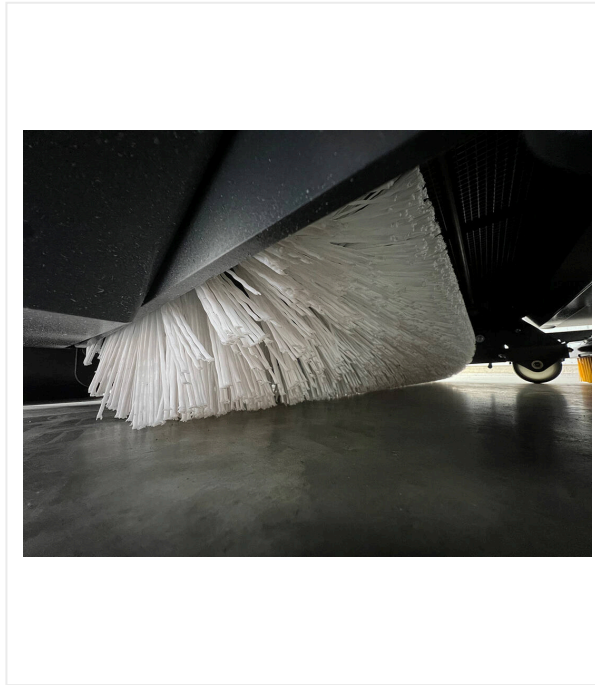


CareMax CM2B / Detail views

CAREMAX - MAINTENANCE

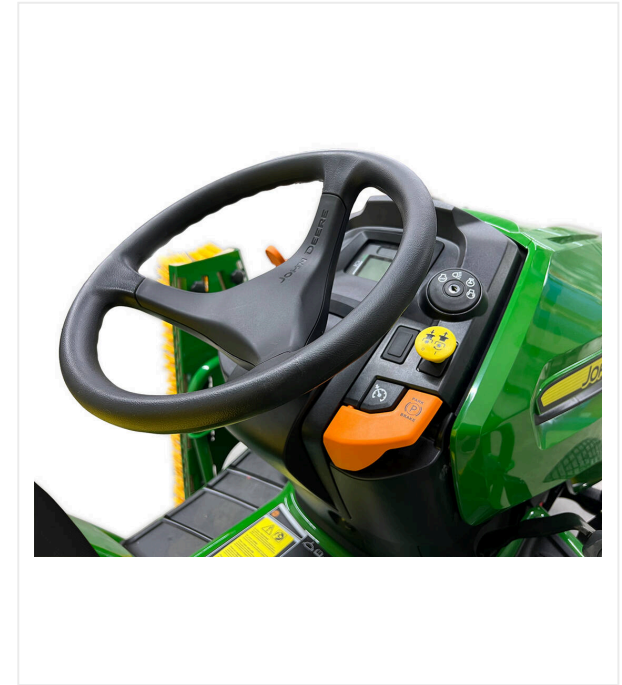


CareMax CM2B



Advanced Maintenance

Rotating brush for advanced maintenance.



Easy handling

Ergonomically arranged operating controls.

CareMax CM2B / Detail views

CAREMAX - MAINTENANCE



Display

To control functions and service intervals.



Gently

Working depth of the steel tines are adjustable for gently loosening of the infilling material.



SMG dust filter

Self-cleaning dust filter comply with DIN EN60335-2-69/dust class "M" and EN779 "F8" or "F9".

CareMax CM2B / Detail views

CAREMAX - MAINTENANCE



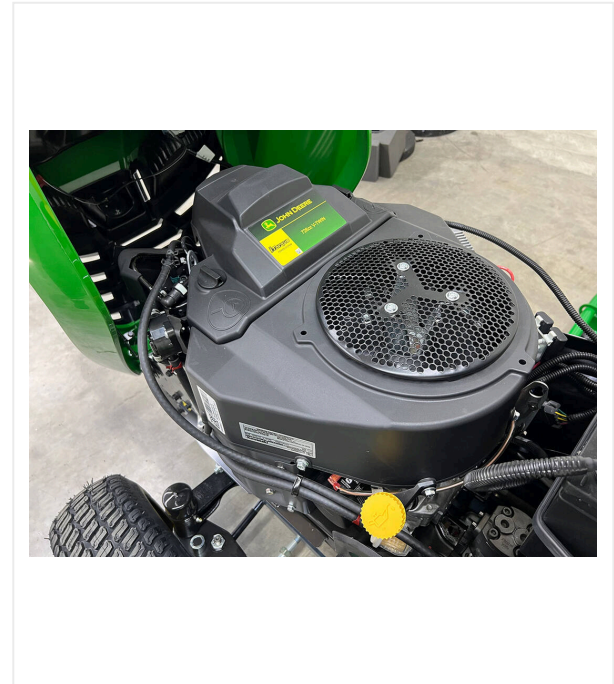
Compact

Drag brushes can be folded.



Versatile

Material flap to adjust the flow of debris and infill.



Engine

2-cylinder petrol engine, air-cooled / 16,4 kW (22,3 PS).

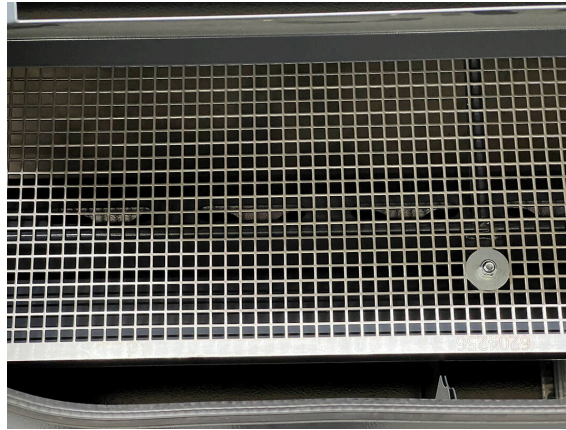
CareMax CM2B / Detail views

CAREMAX - MAINTENANCE



SMG Omega

Drag brush quick change system.



4 – 10 mm

SMG adjustable sieve for every particle size.



Comfort

Suspended and adjustable driver seat.

CareMax CM2B / Detail views

CAREMAX - MAINTENANCE



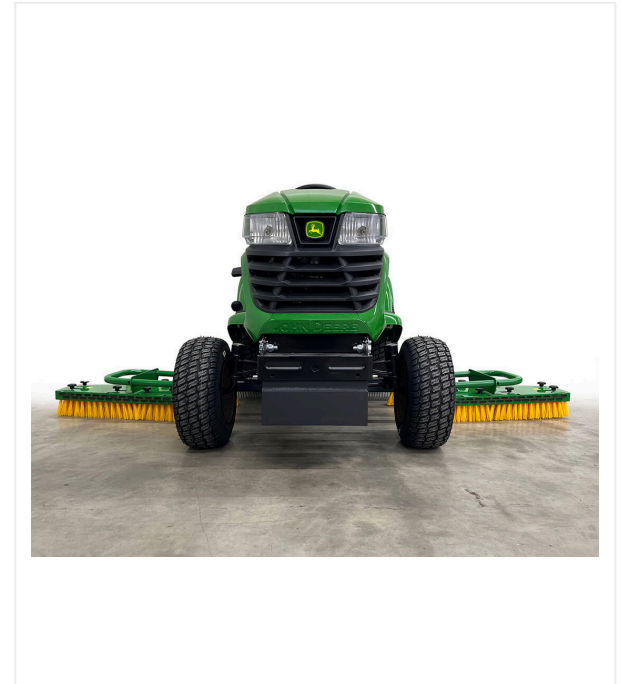
Precision

Handwheel for comfortable adjustment and scale to control the working depth.



SMG Omega

Side brush quick change system.



Wingspan

Drag brush for the maintenance process (working width 2,400 mm), adequate adjustable steel tines for loosening of the infilling material.

CareMax CM2B / Detail views

CAREMAX - MAINTENANCE



Rubber drag mat

Item no. 6400241

Rubber drag mat with steel frame.

L 1,500 x W 2,000 x H 70 mm

CareMax CM2B / Detail views

CAREMAX - MAINTENANCE

Item number/s:	6400203
Drive	2-cylinder petrol engine, air-cooled / 16,4 kW (22,3 PS)
Traction drive	hydrostatic, driving speed up to 15 km/h
Filter box	permanent filter with continuous dedusting
Rotating brush	working width 1,100 mm
Working width	2.400 mm
Weight	685 kg
Dimensions	L 2,900 x W 1,300 x H 1,250 mm
Shipping dimensions	L 2,900 x W 1,300 x H 1,300 mm

Subject to technical changes



passion for sports grounds

SMG Sportplatzmaschinenbau GmbH | Robert-Bosch-Str. 3, DE - 89269 Vöhringen / Germany | Phone: +49 (0) 7306 96 65 0

Fax: +49 (0) 7306 96 65 50 | info@smg-machines.com | www.smg-machines.com