

# SportChamp

## SC3D4HL

### Multifunctional ride-on machine for contractors for the advanced maintenance of artificial turf.

The new SportChamp SC3 offers a wide range of tasks for maintaining different synthetic sports surfaces in sports facilities. By the use of different attachments all synthetic sport surfaces can be cleaned and maintained according to the manufacturer's guidelines and beyond that for an efficient and economic upkeep of the surface.

The operating principle of the SportChamp SC3 has not changed: In a single operation, SportChamp levels the infill material of filled surfaces with its steerable, low-wear brush and eliminates contamination at the same time. Thus the infill material will be loosened and the fibre will be put upright again. Impurities will be vacuumed into a large-volume filter box during the surface maintenance. The robust filter unit with high pulling power is controlled automatically and cleaned within minutes. Since the filter box opens for emptying automatically, you must no longer remove it for emptying. With its effective working width of 1,100 mm, and the wide range of attachments, SC3 will facilitate and accelerate all necessary care tasks.

The range includes attachments for the winter services and the top-dressing of infill material, for the removal of leaves, the loosening of extreme compaction and the spraying of care products. The application area of the SportChamp is enlarged by additional attachments for non-infilled artificial turf, synthetic sports surfaces or sidewalks. Thereby SC3 is the multifunctional care and maintenance machine for your sports facility. Beside the classic, weekly maintenance tasks the SMG SportChamp can additionally carry out the annual basic and deep cleaning.

The third generation of the SportChamp boasts multiple improvements. For example, the new infinitely adjustable tilt steering column that can now further modify the driver's position in accordance with the individual body mass of the operator. With the new EcoDrive SportChamp SC3 provides full engine power, but with lower fuel consumption and significantly lower noise emissions.

SMG dust filters installed by SMG comply with DIN EN60335-2-69/dust class „M“ and EN779 „F8“ or „F9“. Dust with a high proportion of fines as well as granulate/fibre abrasion (microplastics) are extracted via the powerful turbine and bound in the filter.

Art.-No. 8800090

<b>Drive</b>	3-cylindere engine, water-cooled / 16.1 kW (21.9 HP)
<b>Traction drive</b>	Hydrostatic, speed up to 10 km/h Hydraulic lifting device for accessory attachments and filter box, Differential lock
<b>Capacity of tank</b>	approx. 16 litres
<b>Brush working width</b>	depending on brush: 900 - 1.600 mm
<b>Weight</b>	805 kg
<b>Dimensions</b>	L 2,300 x W 1,140 x H 2,100 mm

Subject to technical changes



# SportChamp

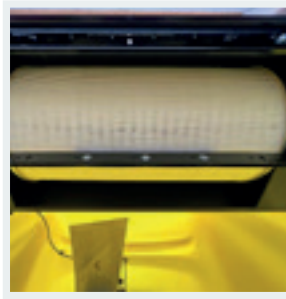
## SC3D4HL



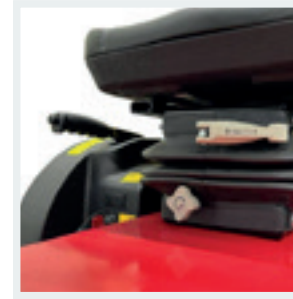
**HYDRAULIC LIFTING OF CONTAINER**  
Allows comfortable emptying in containers.



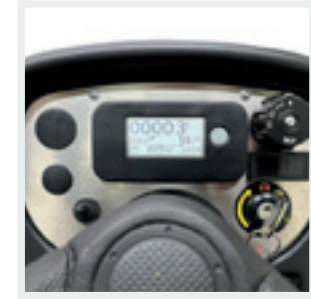
**NEW EQUIPMENT**  
Filter box with larger capacity, automatically cleaning filter and self closing tailgate.



**FILTER**  
Dust filters comply with DIN EN60335-2-69/dust class "M" and EN779 "F8" or "F9".



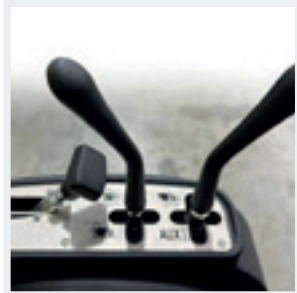
**COMFORT**  
Suspended and adjustable driver seat.



**DISPLAY**  
To control functions and service intervals.



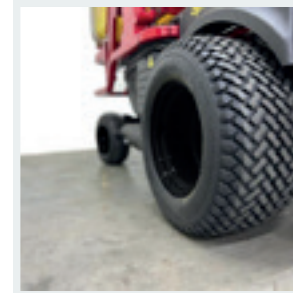
**PEDAL**  
Infinitely variable hydrostatic drive.



**EASY HANDLING**  
Ergonomically arranged operating controls.



**COUPLING**  
PTO to power the attachments.



**WHEELS**  
Tires especially for use on turf ensure minimal pressure on the ground



**REFUELING**  
Fuel tank neck outside for 16 liter fuel tank.



passion for sports grounds

[www.smg-machines.com](http://www.smg-machines.com)